

Dublin - 2017



Clinical background

- ▶ Male, 54
- ▶ History of PSC, UC, variceal bleeds
- ▶ Listed for OLT May 2017
- ▶ Transplanted 6/6/2017
 - ▶ Donor A pos, CMV neg
 - ▶ Recipient A pos, CMV pos
 - ▶ Very short bile duct, hepaticojejunostomy



- Post OLT-

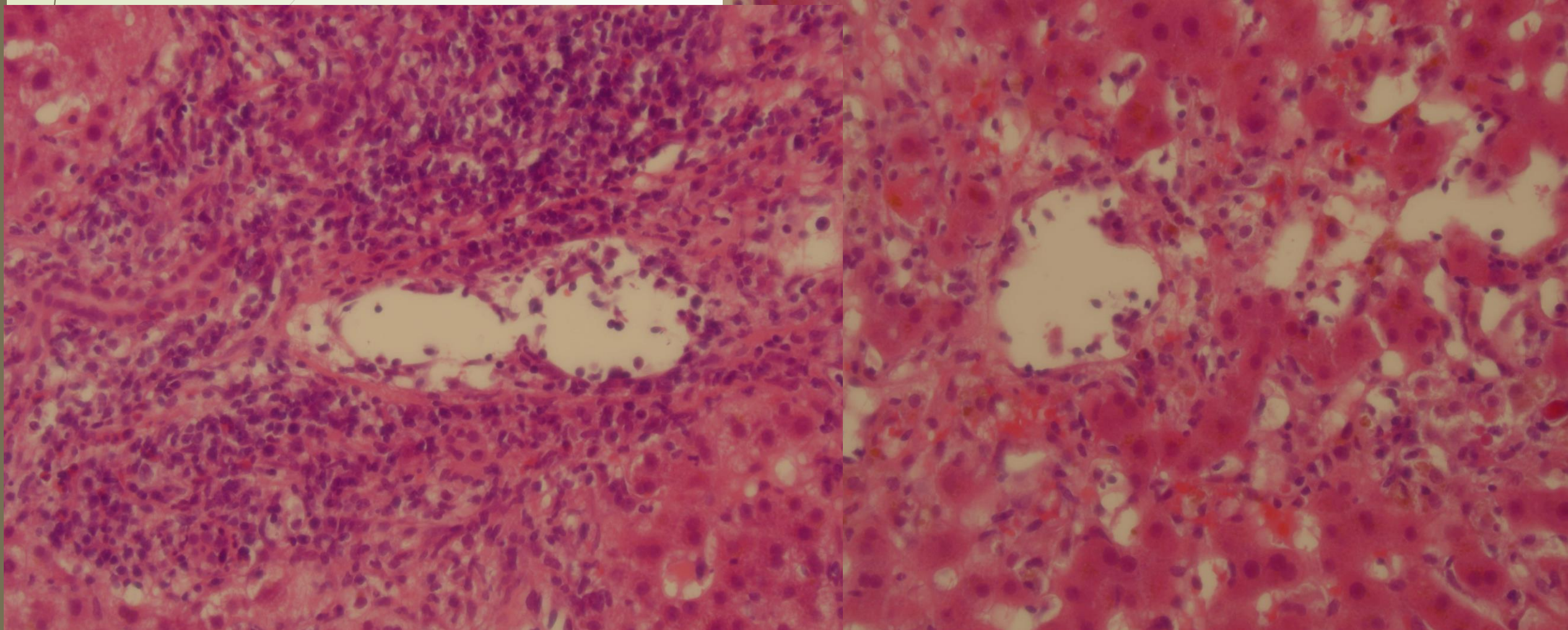
- renal dysfunction

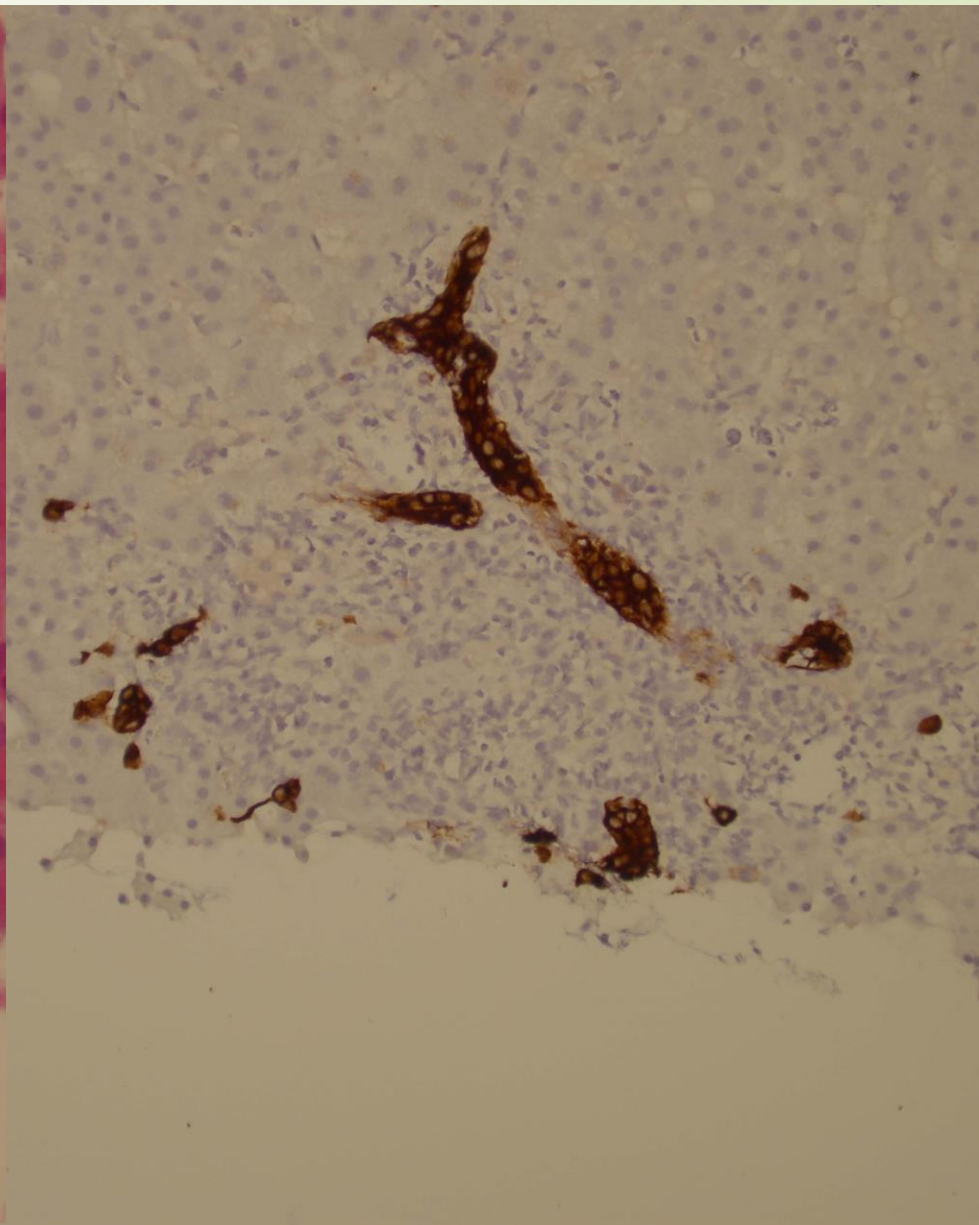
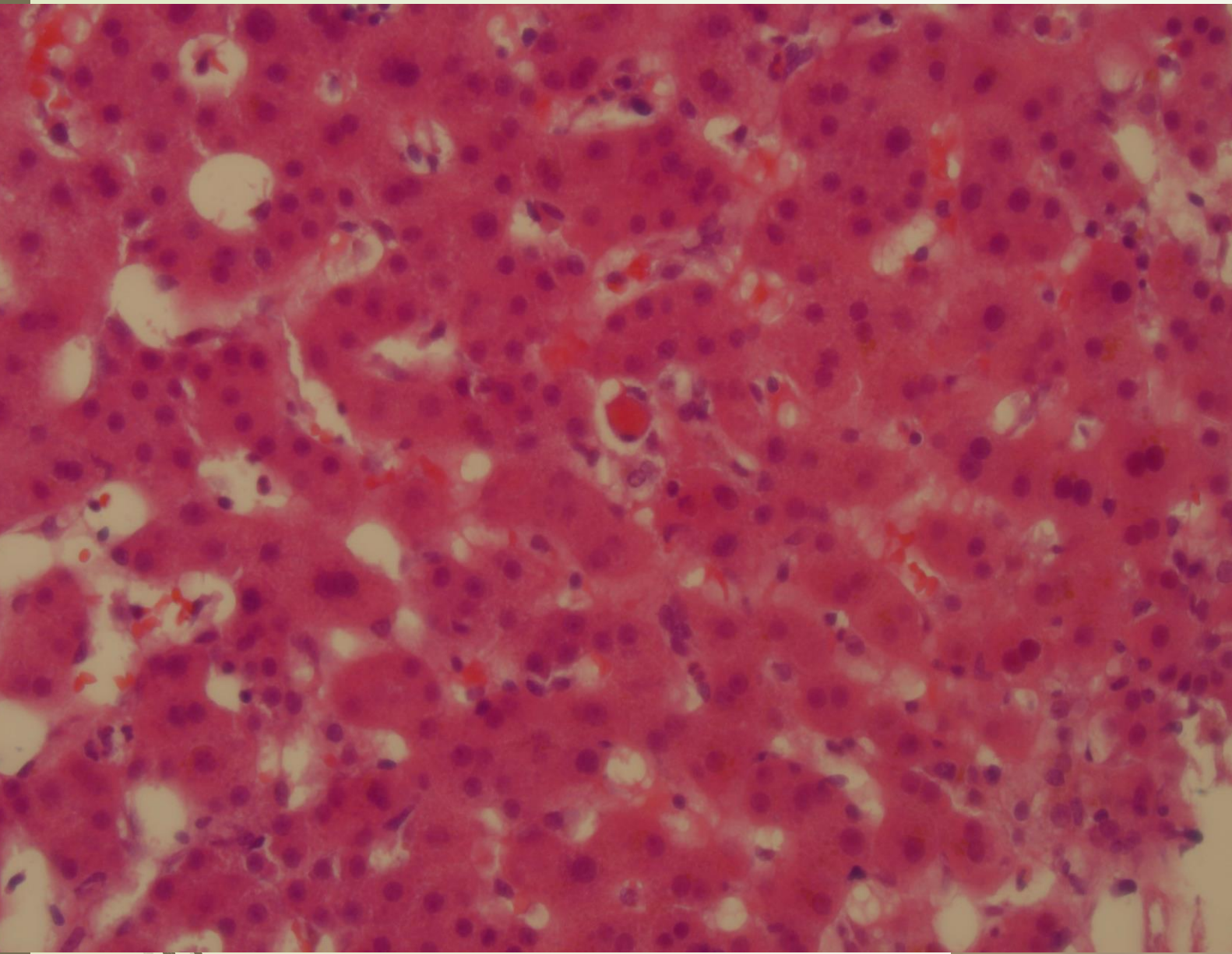
- Difficulty maintaining immunosuppression due to fluconazole

- Biloma (pig tail)

- Hydropneumothorax (chest drain)

Day 14- liver biopsy
Severe ACR



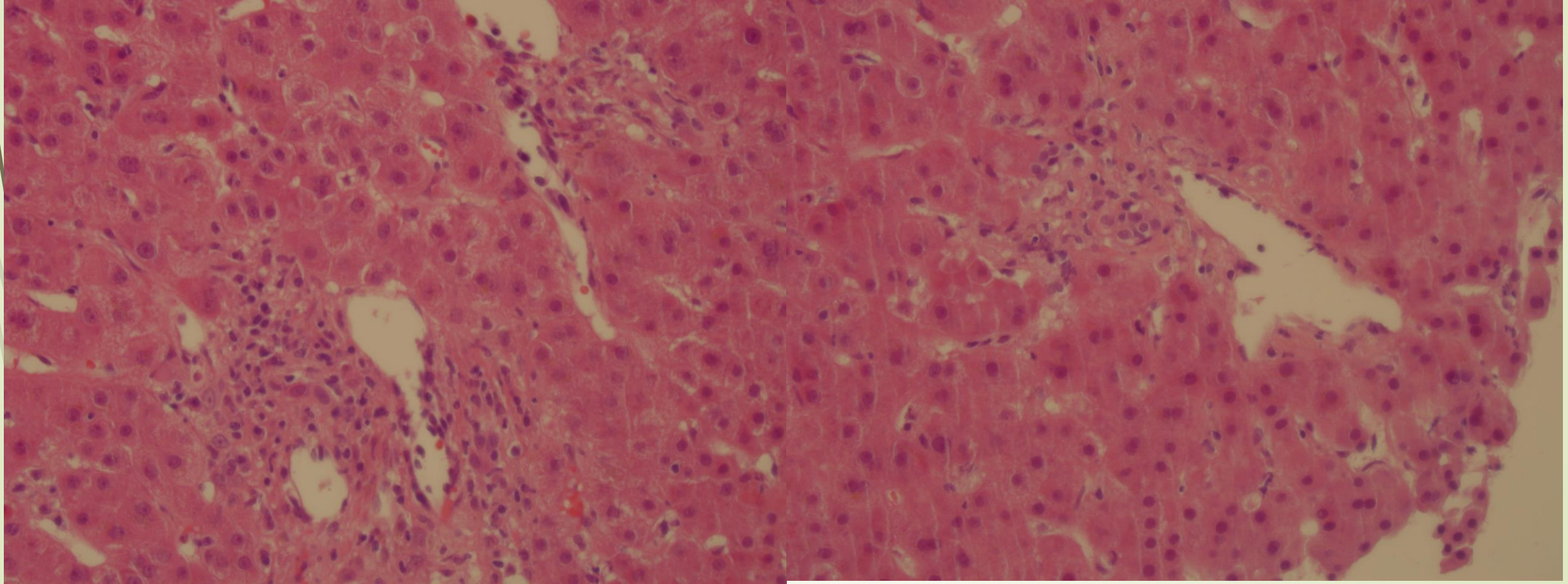


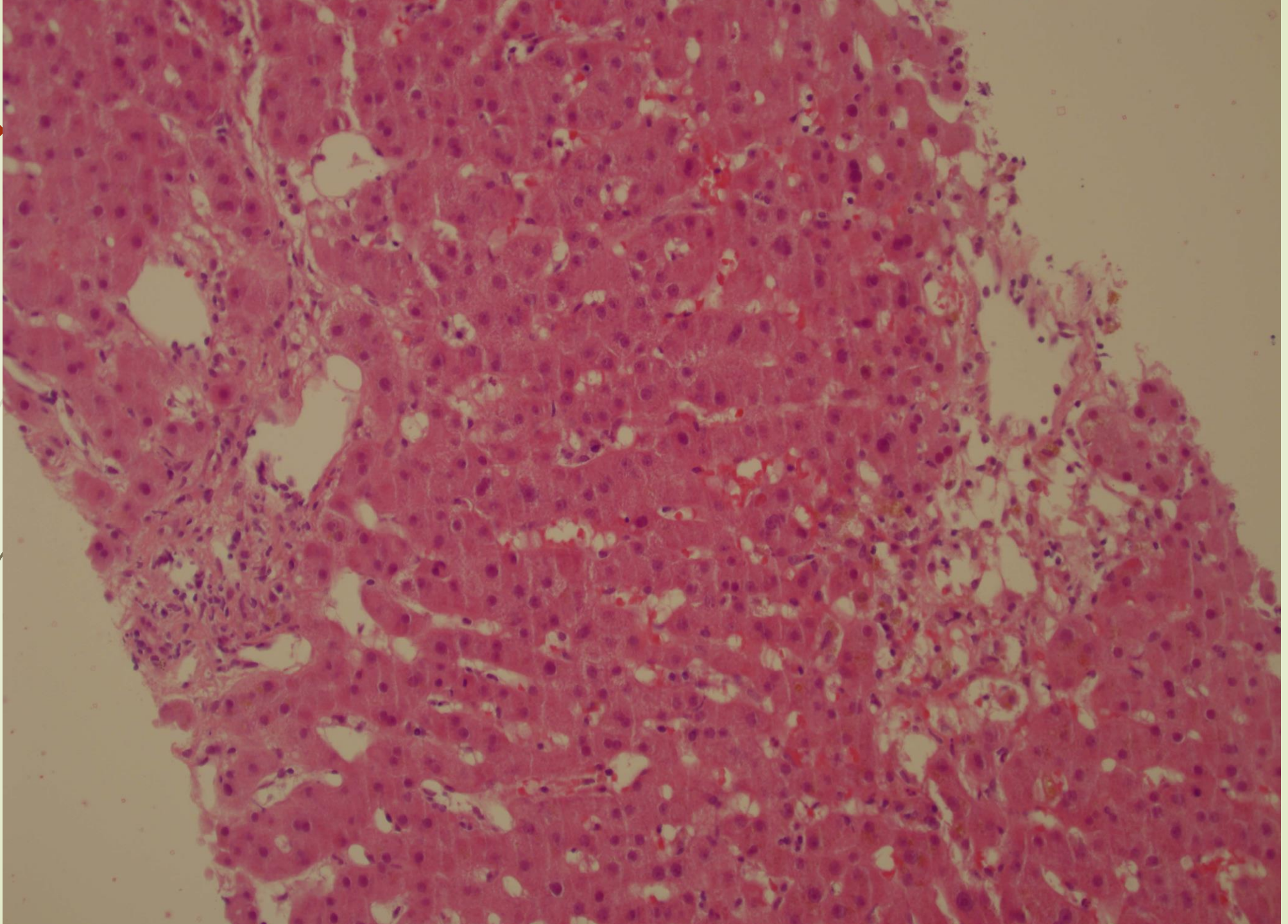


Immunosuppression

- Steroid pulses x 2 iv
- Prograf (tacrolimus)
- Steroid PO

Second biopsy – day 21




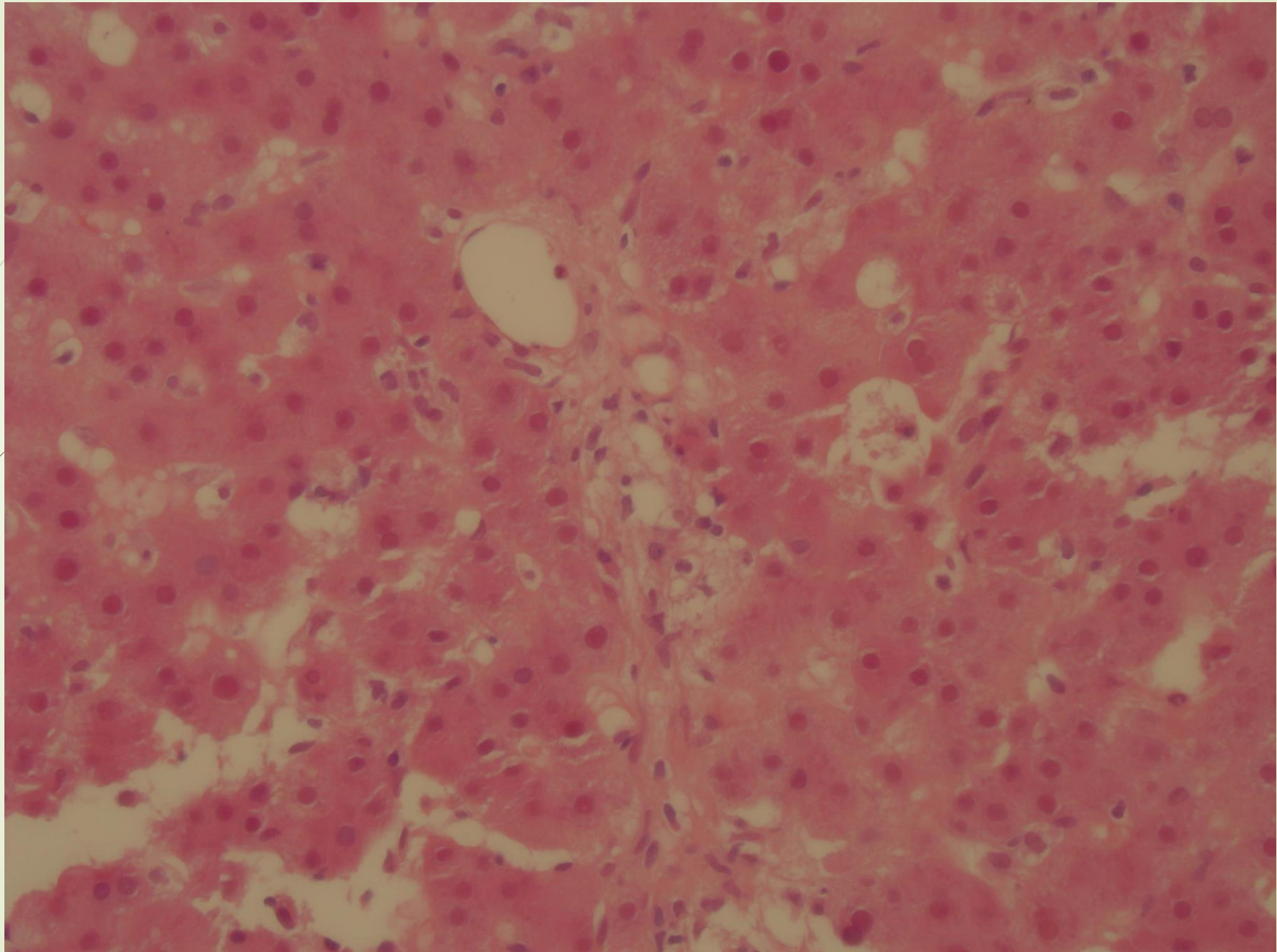


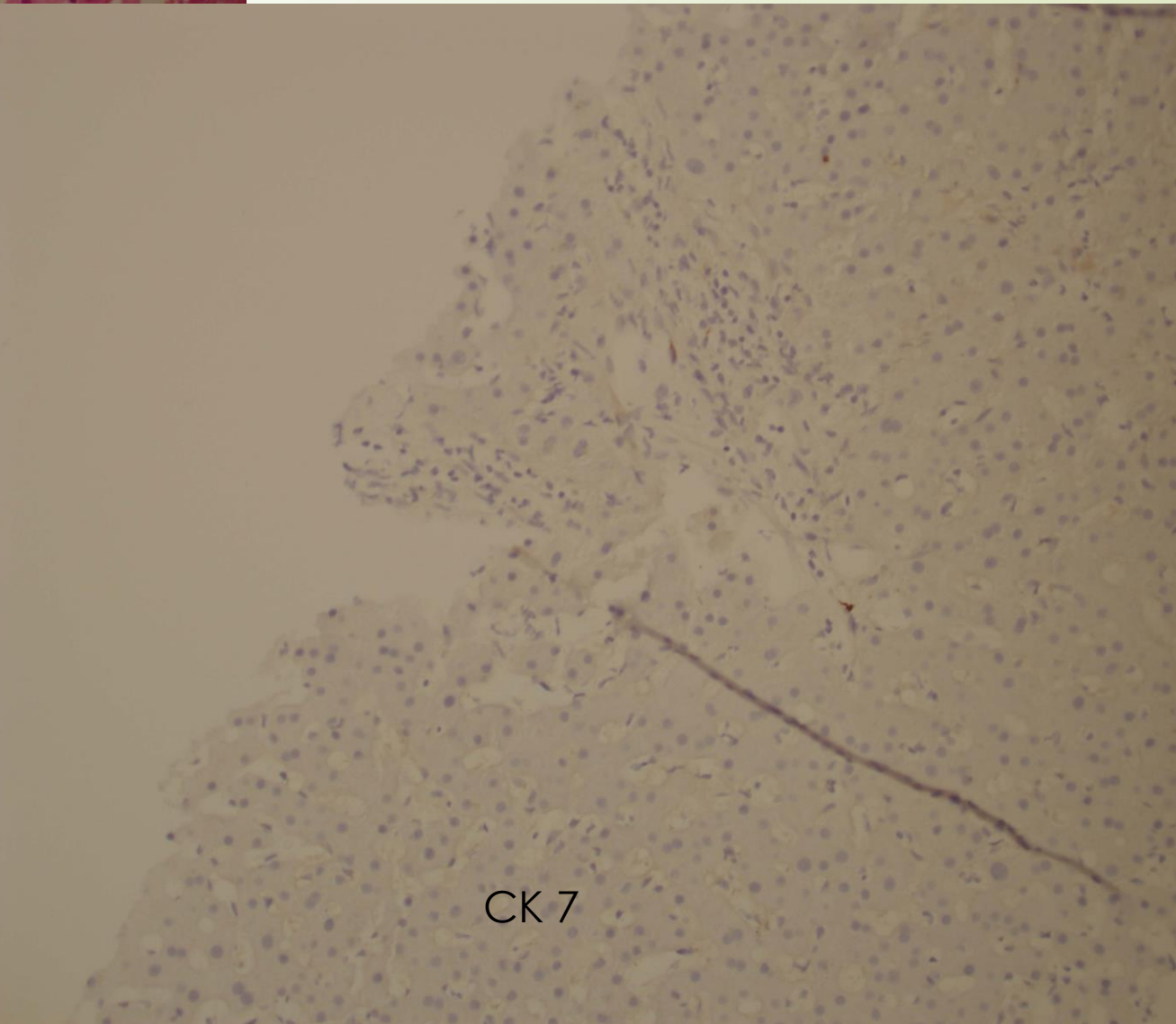
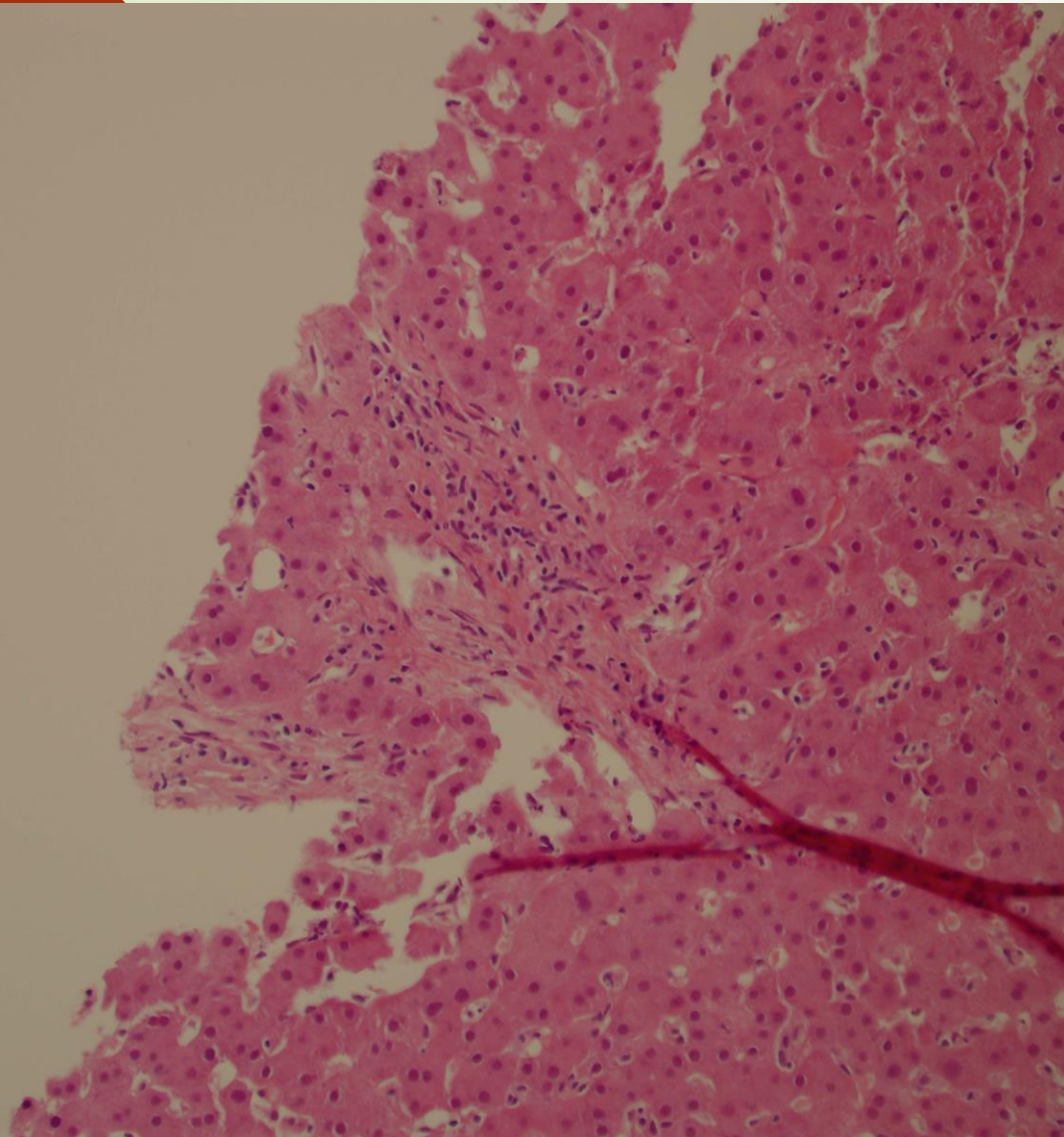


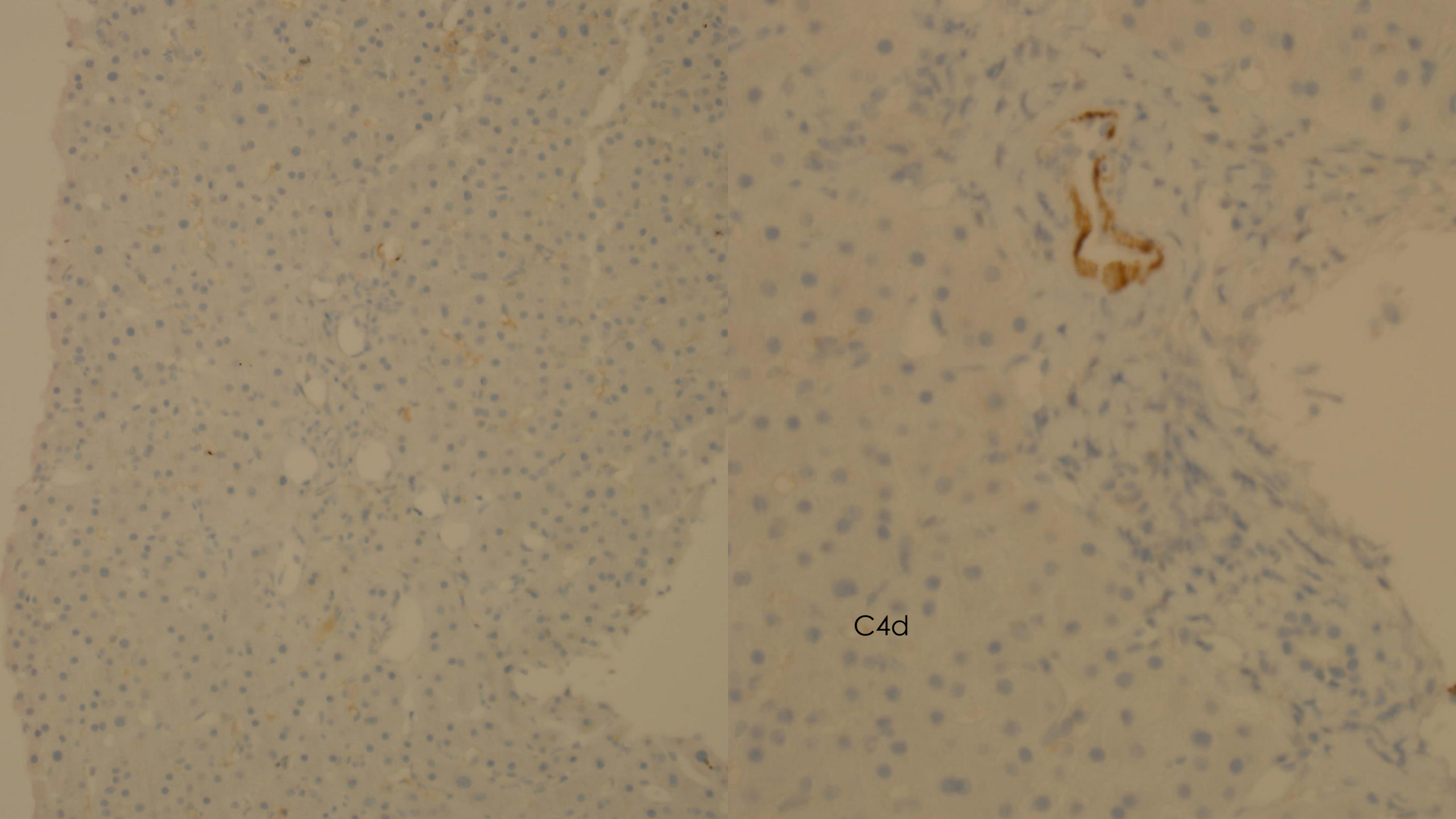
C4d



- 
- Treated with Cellcept
 - Bastiximab x 1 dose
 - On Prograf – interaction with Fluconazole , so dosage reduced
 - Biopsy day 31 – (Biloma effect clinically ?)







C4d

Donor HLA Type: A2; A3; B27; B44; Bw4; Cw2; Cw5; DR4; DR8; DRw53; DQ7; DQa3; DQa6; DP3; DP4; DPa1
Matchgrade (6 loci): X2X21X

Donor Reactivity Summary ³

Pre-Tx Reactivity: *None Recorded*

New Reactivity Post-Tx: B27 B44 DQ7 DQa6 DR4 DRw53

Reactivity in this sample: B27 B44 DQ7 DQa6 DR4 DRw53

Sample Summary

Comments:

Donor specific HLA antibodies in this sample. Donor specific antibodies detected at a significant MFI level. Suggest urgent review and correlate with clinical and histological findings.

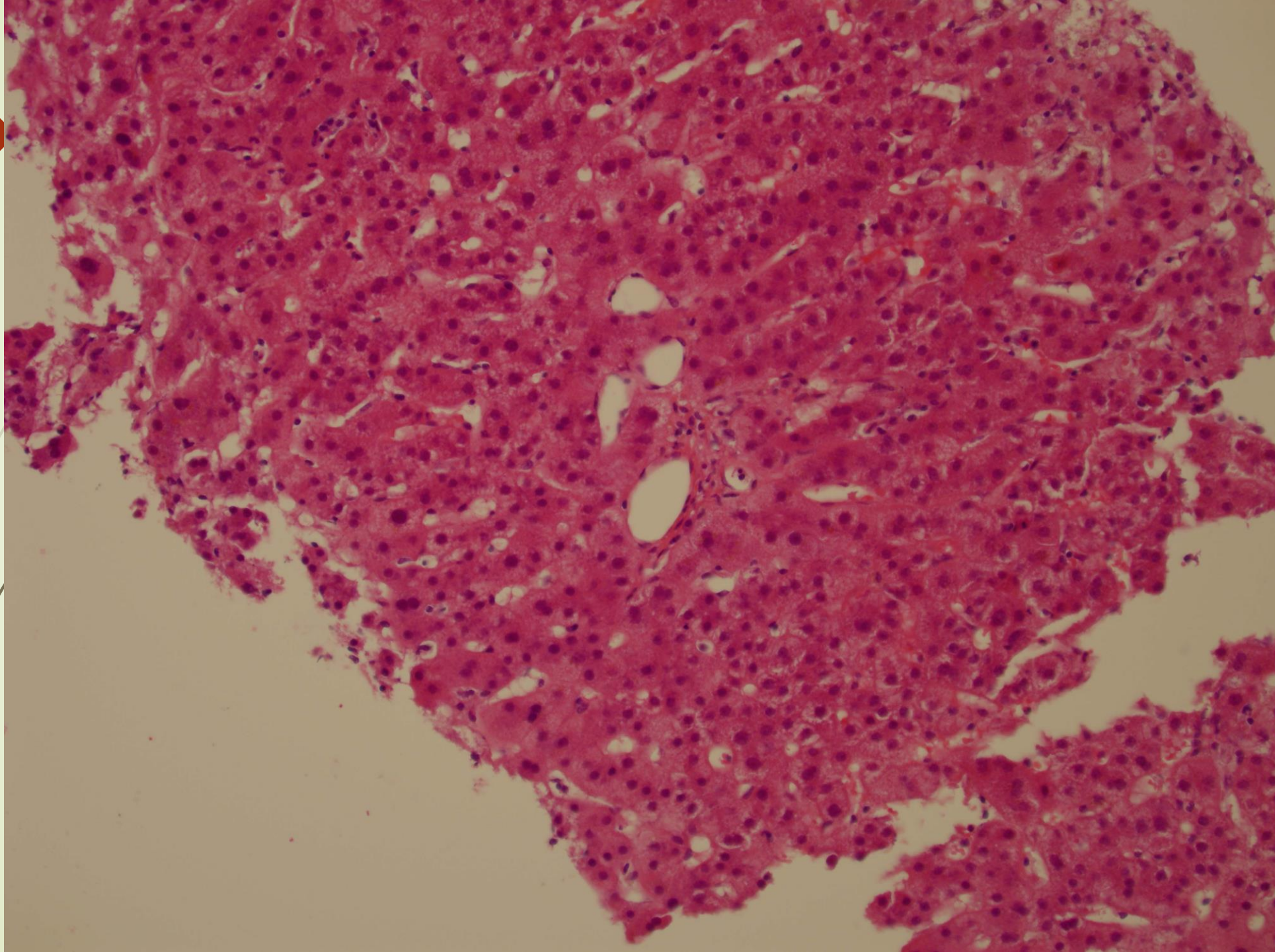


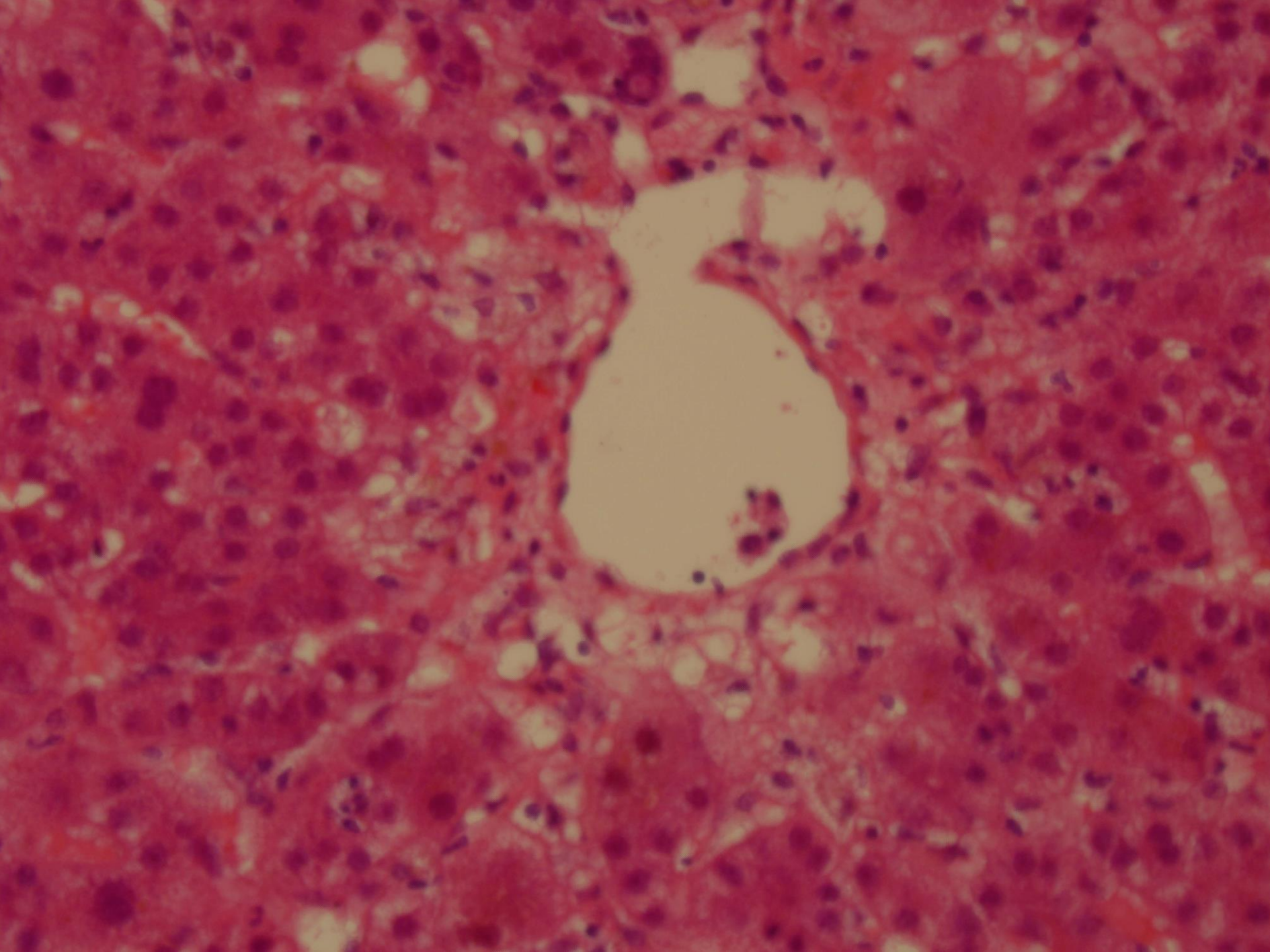
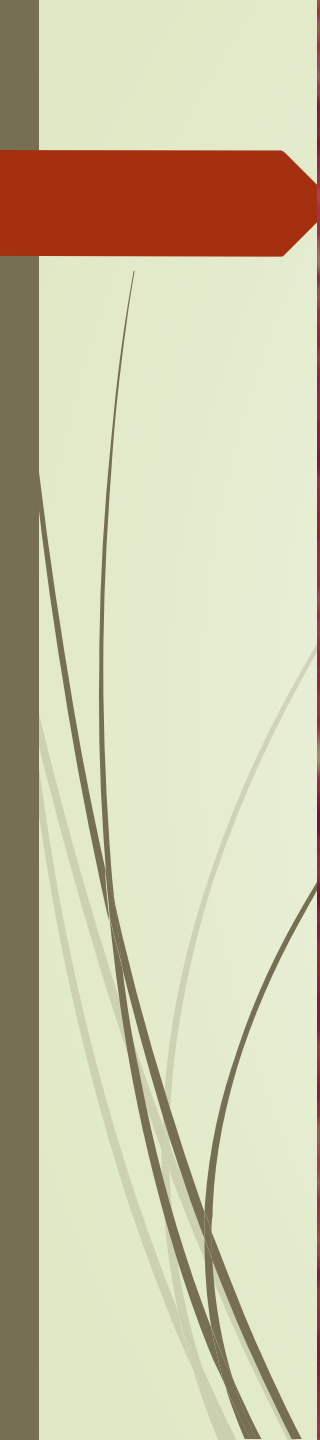
Radiology day 31

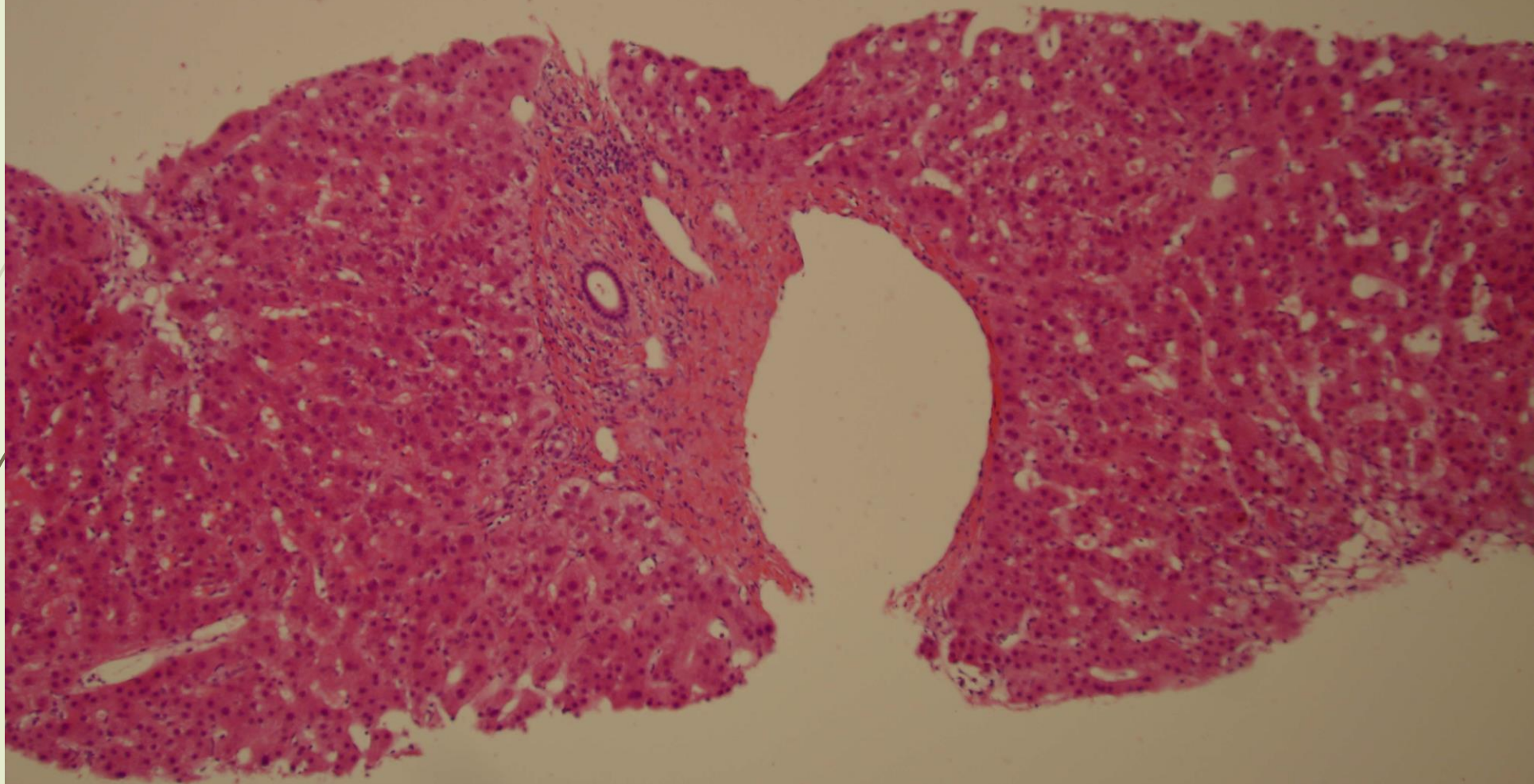
- ▶ Stenosed donor artery at anastomosis and distally
- 

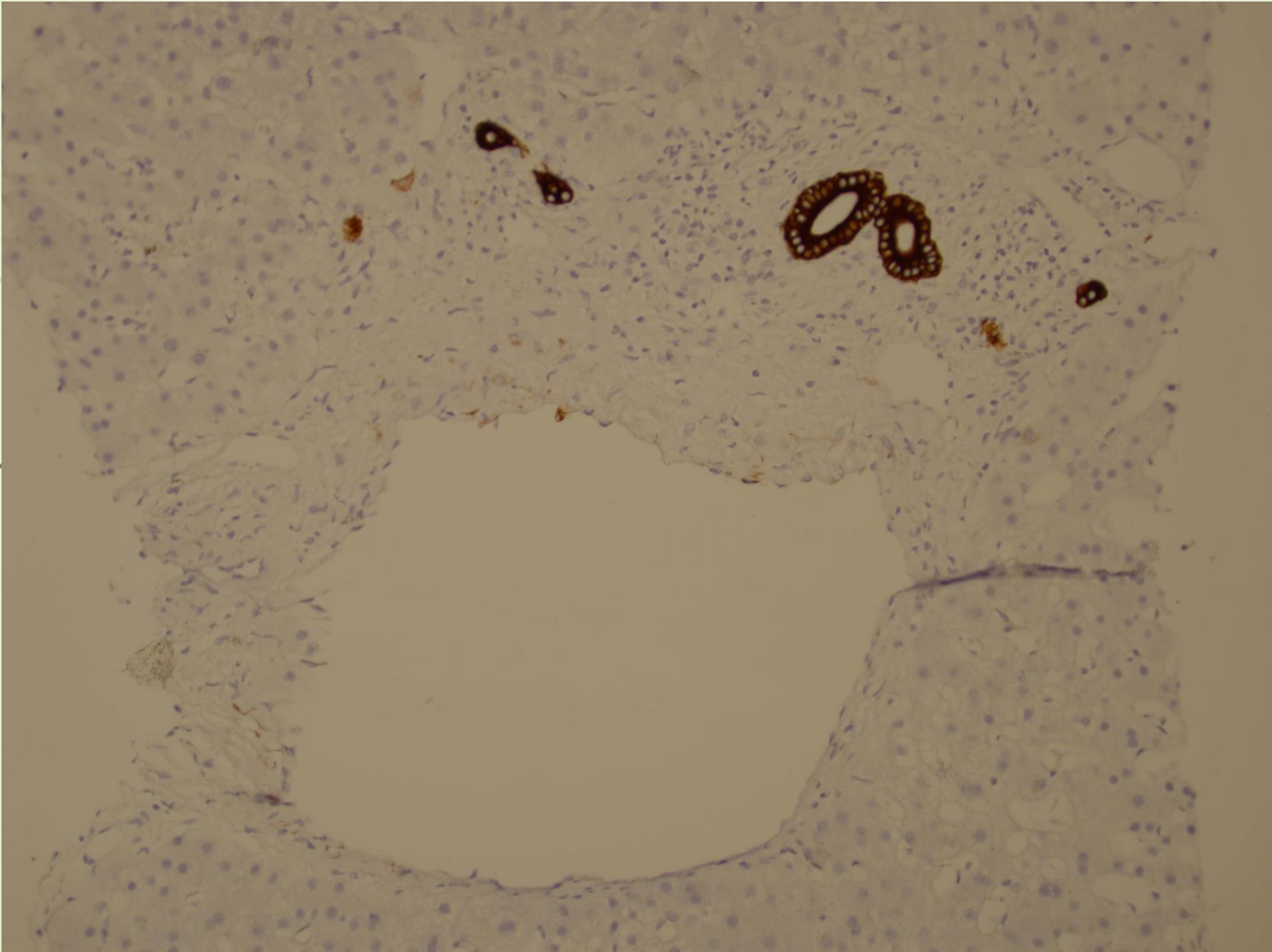
A histological section of tissue stained with hematoxylin and eosin (H&E). The tissue shows a dense population of cells with dark purple nuclei and pink cytoplasm/extracellular matrix. There are several elongated, pale, eosinophilic structures scattered throughout, which appear to be cross-sections of elongated cells or small vessels. The overall architecture is somewhat disorganized, suggesting a developing or regenerating tissue.


Bx Day 41









- 
- ▶ Re-listed initially; now removed
 - ▶ Discharged home (Galway)
 - ▶ On Tacrolimus/Prednisolone/ Septrin/Valganciclovir/ glycoside
 - ▶ Follow up
 - ▶ Jaundiced ++
 - ▶ Alk phos >1500
 - ▶ gGT > 1500
 - ▶ Bilirubin 200



Summary

- ▶ Severe AC rejection Banff 8 day 14
- ▶ Poor clinical response day 21; (improved Banff, 6)
- ▶ Ductopenia day 31 : 1 of 6 PTs has a bile duct
 - ▶ DSA significant levels
 - ▶ Minimal C4d by immunohistochemistry (paraffin embedded tissue)
- ▶ Ductopenia day 41 : 2 of 7 PTs have bile ducts
- ▶ Accelerated rejection due to C4d poor AMR ?